

Chromium, Nickel and Zinc Induced Histopathological Alteration in the Liver of Indian Common Carp *Labeo rohita* (Ham.)

Arun Kumar Singh*, K. S. Rana and Kavita Sharma**

*Department of Zoology, Agra College, Agra (U.P.) -282002, India

**Department of Zoology, Govt. P.G. College, Jalesar, Etah (U.P.) – India

*Email: aksingh03091980@gmail.com

ABSTRACT

In the present investigation, adult live specimens of edible freshwater cyprinid, Labeo rohita were procured from local fish market and various fish tissues liver were processed for heavy metal estimation and histopathological studies. Degenerative histopathological alterations were seen in liver due to chronic exposure of the fish, Labeo rohita to chlorides of chromium, nickel and zinc for 30 days. However, more severe degenerative changes were observed in case of zinc chloride exposed fish than nickel chloride and chromium chloride treated fishes, indicating more toxic nature of zinc chloride. There were enlarged nuclei, condensation of cytoplasm and disarray of hepatic cords blood congestion in sinusoids, vacuolation of hepatocytes and necrosis. Heavy metal salts get entered in the cells by readily crossing the cell membranes where interfere with the enzyme systems in the cells resulting into morphological damage and / or their vital functions could be in jeopardy.

KEYWORDS:Chromium, Nickel, Zinc, Labeo rohita and Liver.

Received 14.02.2019

Revised 08.03.2019

Accepted 19.04.2019

CITATION OF THIS ARTICLE

A Kumar Singh, K. S. Rana and Kavita Sharma. Chromium, Nickel and Zinc Induced Histopathological Alteration in the Liver of Indian Common Carp *Labeo rohita* (Ham.).Int. Arch. App. Sci. Technol; Vol 10 [2] June 2019: 42-48

INTRODUCTION

Contamination of aquatic bodies with a vast array of pollutants has seriously increased the worldwide attention. Anthropogenic activities resulting from modern agricultural practices, rapid urbanization and industrialization involve the increased release of various chemical pollutants and toxicants, such as industrial effluents, biocides, pesticides, heavy metals etc. which ultimately reach the aquatic environments and become responsible for their degradation [32]. Among these pollutants, heavy metals have been recognized as strong biological poisons because of their persistent nature, toxicity, tendency to get accumulated in organisms and undergo biomagnifications [10].

The term 'heavy metal' refers to any metal or metalloid that has relative atomic density greater than 4g/cm³ or 5g/cm³ and is toxic even at very low concentrations [23]. Heavy metals are environmentally ubiquitous. They get easily dissolved and are transported by water to be readily taken up by aquatic biota. Due to its high toxicity, long persistence and non-biodegradable nature in the food chain, they constitute a core group of aquatic contaminants causing cellular toxicity, mutagenicity and carcinogenicity in animals [5].

Among the aquatic fauna, fishes are the valuable organisms in the study of heavy metal pollution, because they explore freely among the different trophic levels in an aquatic environment [27, 9]. Fish fauna assimilate heavy metal contaminants by different ways like intake of particulate matter suspended in water, ion-exchange of dissolved heavy metals across lipophilic membranes (gills) and adsorption on surface of tissues and membrane.

Heavy metal distribution among different fish tissues also depends upon the mode of exposure [2].

Histopathological changes are used as biomarkers to evaluate the overall health of fish exposed to contaminants [1]. The major advantage of using such markers in environmental monitoring is that it allows examining specific vital organs including liver that is responsible for fundamental functions such as accumulation and biotransformation of xenobiotics and excretion in fish [13]. Liver is associated with the detoxification and biotransformation due to its position, function and blood supply and also, it is one of the organs most vulnerable to damage caused by variety of toxicants [8].

Chromium plating is one of the major uses of chromium. Steel fabrication, paint, pigment manufacturing and leather tanning constitute other major uses of chromium. Effluents from these processes are strongly acidic and may contain the toxic hexavalent chromium or the less toxic trivalent form. Hexavalent chromium is the more toxic form. It is derived from the oxidation of ores and also from the combustion of the fossil fuels, wood and paper and is relatively stable in water. It causes irritation to sensitive epithelial lining and results into ulceration [14].

Nickel finds numerous applications in many industries because of its corrosion resistance high strength and durability, pleasing appearance, good thermal and electrical conductivity and alloying ability. The production of alloys accounts for approximately 75% of total nickel consumption [22, 23, 34]. The pathogenesis of nickel toxicity is relatively complex because of the large number of chemical and physical forms.

Zinc, an essential trace metal becomes toxic when the nutritional supply becomes excessive. The main uses of zinc are in the manufacture of galvanized iron, bronze, paint (white), rubber, glazes, enamel glass, paper, as a wood preservative ($ZnCl_2$, fungicidal action), petrochemicals, and fertilizers and in steam generation power plants etc. [23] Some zinc is released into the environment by natural processes, but most comes from activities of people like mining, steel production, coal burning, and burning of waste. It attaches to soil, sediments, and dust particles in the air. Zinc compounds can move into the groundwater and into lakes, streams, and rivers. Most of the zinc in soil stays bound to soil particles. Moderately increased zinc concentrations in water stemming from the release of zinc from drainage pipes due to corrosion. It builds up in fish and other organisms [16].

Fish is high in omega-3 and protein that the human body needs to stay healthy. However, potentially dangerous heavy metals are absorbed into the body tissues of fish that are transferred to humans when fish is eaten. Good quality of food for consumption can only be produced in an environment free from contamination. Fish, having great economic importance, are affected immensely by various chemicals including heavy metals directly or indirectly in various ways. Several reports indicate high mortality of juvenile fish and reduced breeding potentiality of adults after long term exposure to heavy metals [24]. The freshwater fish, *Labeo rohita* is of great commercial importance because it is the most common fish widely consumed worldwide. Therefore, it can be a good model to study the responses to heavy metal contaminations.

Histopathological studies on fish are a noteworthy and promising field to understand the structural organization that occurs in the organs due to pollutants in the environment. These structural changes vary with the body parts, nature of the pollutant, medium and duration of exposure [11]. Water quality characteristics also influence histopathological manifestations of toxic effects [21].

MATERIALS AND METHODS

Live specimens of adult freshwater cyprinid, *Labeo rohita*, irrespective of size, weight and sex were procured from local fish market, Agra and Govt. fish farm, Laramada, Agra. Disease-free fish, *Labeo rohita* were bathed in 1% $KMnO_4$ solution and acclimated in big glass aquarium of 400 to 450 liter capacity for a period of 15 days. Chlorine free aged tap water was used in the aquaria. The water had pH 8.2 ± 0.2 ; hardness 280 mg/l; D.O. 6.2 mg/l; total alkalinity 310 mg/l and temperature $25 \pm 2^\circ C$. The fish were fed with rice bran daily at 10.30 am. The water in the aquaria was changed daily after the consumption of food supplied. The healthy fish of both the sexes and uniform size and weight ($125 \pm 2g$) were selected from the lot for experimental purpose. Initially 96h LC_{50} doses were

determined for chromium, nickel and zinc heavy metal compounds by the method as described in standard methods by the APHA [4].

Forty healthy fish from the stock were selected and were divided into four groups. Group-I: Consisted of 10 fish in aged tap water which served as control. Group-II: Consisted of 10 fish kept in toxicant water containing 6mg/l chromium chloride for 30 days. Group-III: Consisted of 10 fish kept in toxicant water containing 4mg/l nickel chloride for 30 days. Group-IV: Consisted of 10 fish kept in toxicant water containing 2mg/l zinc chloride for 30 days.

The fish were exposed to 6mg/l of chromium chloride, 4mg/l of nickel chloride and 2mg/l of zinc chloride, separately, which are $1/10^{\text{th}}$ of their 96h LC₅₀ concentrations. To avoid the effects of starvation, the fish were fed on the rice bran at the average feeding rate of 25mg food \ gm fish \ day. The toxicant solutions and the aged tap water (control) were renewed every day in the morning after removing the unused food, to maintain uniform test concentrations throughout the experimental period. The controls as well as the experimental fish were sacrificed on the day 10 and 30. The liver was dissected out and rinsed in fresh water fish saline to remove the bloodstains. Then the liver tissue was cut into small pieces of desirable size and fixed immediately into aqueous Bouin's fluid. All possible precautions were taken to ensure proper fixation of tissues. The tissues were further processed by standard methods as described by Weissman [33]. The sections were cut and stained with haematoxylin-eosin, processed further, cleaned and then observed under microscope.

RESULTS AND DISCUSSION

Exposure of the fish, *Labeo rohita* to the sublethal concentrations of chromium chloride (6 mg/l), nickel chloride (4mg/l) and zinc chloride (2 mg/l) separately for thirty days resulted into mild to severe alterations in the histological makeup of the liver and the results are presented in the form of actual photographs (Figures, 1 to 7). The results obtained are toxicant and duration dependent.

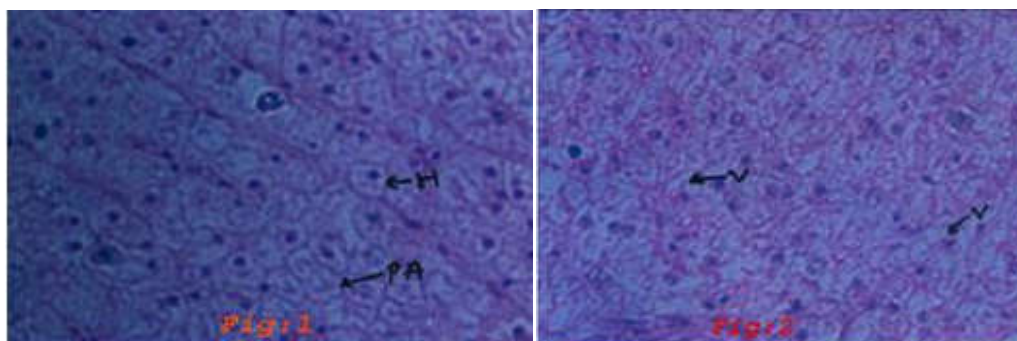


Fig.1] The normal structure showing polygonal hepatocytes (H) and normal pancreatic acini (PA).

Fig.2] Change after exposure to chromium chloride for 10 days as evidenced by disorganized hepatic cells and vacuolation (V).

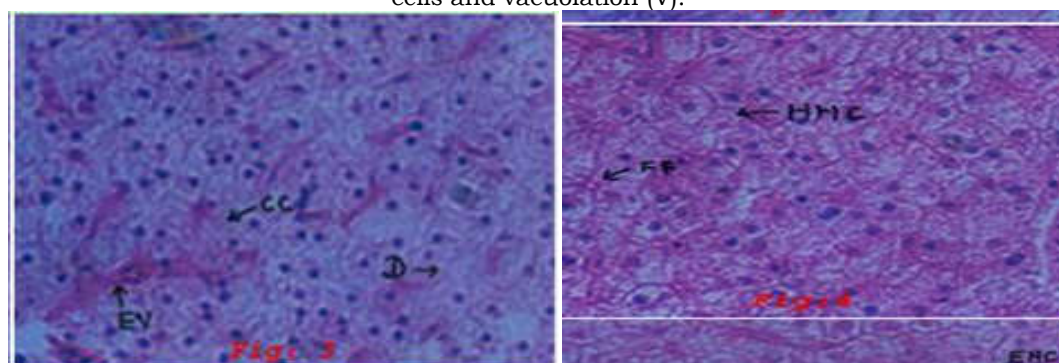


Fig.3] Change after exposure to chromium chloride for 30 days as evidenced by elongation of blood vessels (BV), degeneration (D) and condensation of cytoplasm (CC).

Fig.4] Change after exposure to nickel chloride for 10 days as evidenced by filtered fate (FF) and hypertrophy of hepatic cells (HHC).

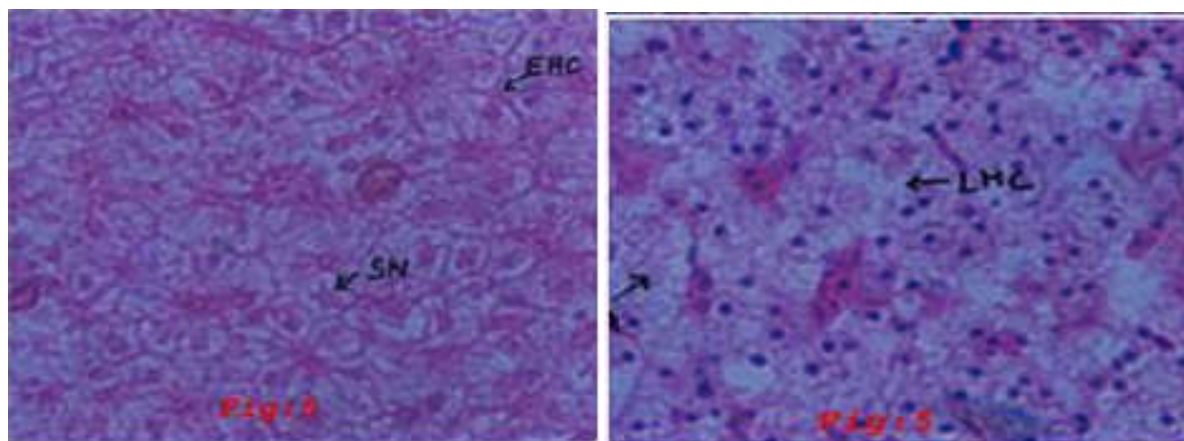


Fig.5] Change after exposure to nickel chloride for 10 days as evidenced by degeneration of sinusoids (DS), loss of identity of pancreatic acini (PA) lysis of hepatic cells (LHC).

Fig.6] Changes after exposure to zinc chloride for 10 days as evidenced by swollen and hypochromic nuclei (SN), disarray of hepatic cords and edematous hepatocytes (EHC).

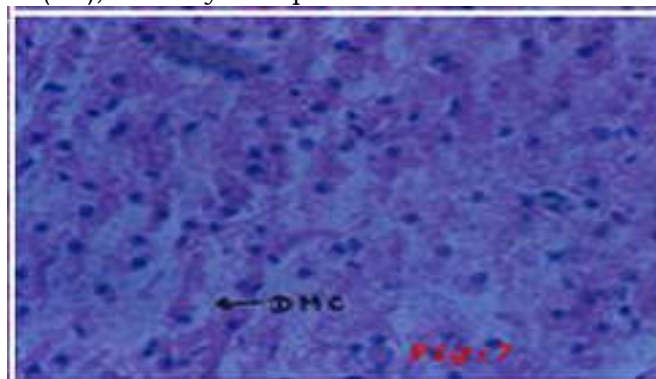


Fig.7] Change after exposure to zinc chloride for 30 days as evidenced by degeneration of hepatocytes of advanced stage (DHC). All preparations in Iron haematoxylin-eosin preparation x-400.

The T. S. of control liver shows continuous mass of hepatic parenchymal cells arranged in cords around blood vessels. The hepatic cells are polygonal in shape and with centrally placed rounded nucleus and homogeneous cytoplasm. Hepatic cells are not arranged to form distinct lobules. Pancreatic acini of exocrine function lie embedded in between the hepatic cells surrounding the blood capillaries (Fig. 1). In the ten days chromium chloride treatment group, the cytoplasmic damage was not so severe but the orientation of the cells was disrupted and vacuolation in the liver cells were found (Fig. 2). Thirty days of chromium chloride exposure also resulted in enlarged nuclei, condensation of cytoplasm and disarray of hepatic cords. Some liver cells appeared almost devoid of cytoplasmic contents (Fig. 3). The lesions are further characterized by elongations of blood vessels, necrosis and degeneration. With ten days of nickel chloride treatment, histological study of liver showed marked alterations. Widespread vacuolation within the hepatocytes and appearance of some typical globular bodies, which may be suspected as, infiltrated fats (Fig. 4). Few hepatocytes lost their polygonal shape as they were hypertrophied. The cell membranes of hepatic cells were found to be thickened. The pancreatic acini around blood capillaries were necrosed. After thirty days treatments with nickel chloride, sinusoids were found to be degenerated resulting into bleeding in the intercellular gaps. Pancreatic acinar cells lost their identity (Fig. 5). Degeneration of hepatic cells was seen prominently. The liver of *Labeo rohita*, after exposure of the fish to zinc chloride for ten days revealed swelling of hepatic nuclei, disorganization of hepatic cells with edematous hepatocytes and many cells were devoid of cytoplasmic contents (Fig. 6). After thirty days entire liver tissue became a necrotic spongy mass with degeneration of sinusoids. Most of the hepatocytes lost their cell boundaries and some of them showed indistinct cell boundaries. Hepatocytes

showed disintegration and at several places the nuclei could not be seen distinctly. The overall picture was one of consistent degeneration (Fig.7).

The histological alterations noticed in the present study are in accordance to the chronic exposure to the different pollutants. The lesions developed in the liver might be due to the cumulative action of toxicant on blood and ultimately to other cellular structures. There seems to be a definite correlation between tissue damage and certain physiological alterations [25]. Liver is the major metabolic center and any damage to this organ would subsequently do, so many physiological disturbances leading to subsequent mortality of fish [24, 30]. The hepatic lesions observed in the present investigation are in accordance to the recordings made by different workers during acute exposure to different pollutants. Sastry and Gupta [29], Patil [28] have reported higher degree of liver damage in acute treatment than the chronic exposure with mercury on *Channa punctatus*. Kumari and Kumar [19] have also reported similar changes in *Channa punctatus* collected directly from highly polluted lake. The present study also revealed that the alterations noticed in the acute exposure were in line to the observations recorded in ninety days chronic exposure to eslan, mercury and ammonia on fish liver [6]. Infiltration of blood filled spaces in the liver along with disarray of cords supports the view of previous workers that heavy metals cause haemorrhage in the internal organs [28, 31]. But it seems that the reported lesions are not heavy metal specific, as other workers have reported similar pathological lesions in the liver of the fish after exposure to insecticides and herbicides [24, 31, 15]. The present results are well in agreement with those of Bhoraskar and Kothari [7] reported severe damage in the liver of *Clarias batrachus* exposed to 10 mg/l zinc sulphate. Histological damage due to zinc in fish liver has also been reported by several workers [12, 26, 35]. Osman *et al.*, [26] recorded congestion and hemorrhage in the hepatic sinusoids with dilation of hepatic vessels, vacuolization and degeneration of hepatic cells with fatty changes with atrophy of pancreatic acini; in liver of the *oreochromis niloticus* exposed to the polluted water containing heavy metal salts. Ant3nio *et al.*, [3] studied histopathological changes in liver of Nile tilapia, *Oreochromis niloticus* exposed to waterborne copper and observed vacuolization and necrosis of the liver parenchyma. Moreover, it was also reported by several studies that chronic heavy metal accumulation in the liver of fish causes hepatocyte lysis, cirrhosis and ultimately death [17].

The liver plays a key role in accumulation and detoxification of heavy metals [12, 24]. Although, according [20], fishes are known to possess sequestering agent (metallothionein), the bioaccumulation of these trace element in the liver tissue reaches a proportion in which the function of the liver is impeded, thus resulting in gradual degeneration of the liver cells syncytial arrangement.

Thus cirrhosis, the outcome of prolonged hepato-cellular injury is manifested by fibrosis of hepatic cords. Oxygen required to support the intense metabolic activity of the liver is supplied in arterial blood via the hepatic artery. In effect, necrosis of parenchyma cells had taken place [25].

CONCLUSIONS

In conclusion, severe histopathological lesions and cellular alterations were observed in major target organs liver of market fish which could be attributed to the significant accumulation of several heavy metals in these tissues beyond the prescribed limits of WHO/FAO. Hence, there is a need of stringent check on the industrial effluents being discharged in freshwater bodies so as to avoid the influx and accumulation of such toxicants in aquatic fauna.

REFERENCES

1. Adams S.M. (Ed).(2002). Biological indicators of aquatic ecosystem stress. American Fisheries Society, Bethesda, Maryland. 1-11.
2. Alam M.G.,G. Allinson,F. Stagnitti,A. Tanaka and M. Westbrooke, (2002). Arsenic contamination in Bangladesh groundwater: a major environmental and social disaster. International Journal of Environmental Health Research. 12,235-253.
3. Antonio,F-F, V. F-C. Jorge, G-S. Sofia, M.M. Sandra, C. Joao, M.Pedro and Antanio Fontainhas-Fernandes, (2007). Histopathological changes in liver and gill epithelium of Nile tilapia, *Oreochromis niloticus*, exposed to waterborne copper. Pesq.Vet.Bras.27(3) 103-109.

4. APHA , (1998). American Public Health Association: Standard methods for examination of water and waste water. 20 th Ed: Lenore SC, Arnold EG and Andrew DE.
5. Authman M.M.N.,S.A. Ibrahim ,M.A. El-Kasheif and H.S. Gaber, (2013). Heavy metal pollution and their effects on gills and liver of the Nile catfish *Clarias gariepinus* inhabiting El-Rahawy drain, Egypt. *Global Veterinaria*. 10(2),103-115.
6. Banerjee,S. and S. Bhattacharya, (1997). Histopathological changes induced by chronic nonlethal levels of eslan, mercury and ammonia in the liver of *Channa punctatus* (Bloch). *J. Environ. Biol.* 18 (2) 141-148.
7. Bhoraskar,S. and S.Kothari,(1997). Toxicity of mercury and zinc in the liver of a cat fish *Ciarias batrachus*. Cited from Recent Advances in fresh water Biology,K.S.Rao,Amol Publication Pvt.Ltd. ed.
8. Camargo M.M. and C.B. Martinez, (2007). Histopathology of gills, kidney and liver of a Neotropic fish caged in an urban stream. *Neotropical Ichthyology*. 5,327-36.
9. Chopra R., V.K. Verma and P.K. Sharma, (2001). Mapping monitoring and conservation of Harike wetland ecosystem, Punjab, India, through remote sensing. *International Journal of Remote Sensing*. 22,89-98.
10. Dinodia G.S., R.K. Gupta and K.L. Jain , (2002). Effect of cadmium toxicity on liver glycogen in some freshwater fishes. *Proceeding of XI National Symposium on Environment*. 11,236-238.
11. Galat, D.L., G.Post; T.J. Kerfe and G.R.Boucks, (1985). Histopathological changes in the gill, kidney and liver of Lohonta cut throat trout, salmo clarki Henshawi, living in lakes of different salinity-alkalinity. *J.Fish. Biol.* 27, 533-552.
12. Gbem TT, Balogun J, K Lawal, FA., PA. Annune , (2001). Trace metal accumulation in *Clarias gariepinus* (Teugels) exposed to sublethal levels of tannery effluent. *The Sci. of the total Environ.* 271: 1-9.
13. Gernhofer M., M. Pawet, M. Schramm, E. Muller and R. Tribskorn, (2001). Ultrastructural biomarkers as tools to characterize the health status of fish in contaminated streams. *Journal of Aquatic Ecosystem Stress Recovery*. 8,241-260.
14. Goyer, R.A., (1991). Toxic effects of metals In: Amer, M.O., Doull J. Klaassen C.D. (ed) Casarett and Doull's Toxicology; Basic science of poisons, Pergmon Press, Oxford.
15. Jain, R. and K.D.Mishra, (1994). Histopathological alterations in the liver of *Punctius ticto* due to exposure of herbicide atrazine. *Poll. Res.* 13(4), 375-380.
16. Joshi, H.C., (1990). Environmental constrains in management of fisheries in open water system. *Proceedings of the National Seminar on Management of fisheries in Inland open water system of India, barracpore. West Bengal India. Dec. 1988.* (1990), 23-30.
17. Kaur, S., K.S. Khera and J.K. Kongal, (2018). Heavy metal induced histopathological alterations in liver, muscle and kidney of freshwater cyprind, *Labeo rohita* (Hamilton). *J. of Ent. & zool. Stu.* 6 (2),2137-2144.
18. Kumar, S and S. C. Pant , (1981). Histopathology effects of acutely toxic levels of copper and zinc on gills, liver and kidney of *Punctius conchoniuis* (Ham.). *Ind. J. Expt . Biol.* 19: 191-194.
19. Kumari, S. Anitha. and N.S. R.Kumar ,(1997). Histopathological alterations induced by aquatic pollutants in *Channa punctatus* from Hussain sagar lake (A.P.). *J.Environ. Biol.*18(1) 11-16.
20. Mahmoud S.A. and A.A. Abd El-Rahman, (2017) . Eco-toxicological studies of water and their effect on fish in El Manzalah Lake. *Research Journal of Pharmaceutical, Biological and Chemical Sciences*. 8(2),2497-2511.
21. Mary S.C.H., S. Silvan , E.K. Elumalai, (2014). Toxicology study on lead nitrate induced fresh water fish *Cirrhinus mrigala* (Hamilton). *European Journal of Academic Essays*. 1(7),5-8.
22. Nicolaidou, A. and J.Nott , (1989). Heavy metal pollution induced by ferronickel smelting plant in Greece. *Sci. of the Total Environ.* 84, 113-117.
23. Nriagu, J.O. and J.M Pacyna.,(1988). Quantitative assessment of worldwide contamination of air, water and soils by trace metals. *Nature* 333: 134-139.
24. Olojo, E.A.A., Olurin, K.B., Mbaka G.and A.D. Oluwemimo, (2005). Histopathology of gill and liver tissue of the african catfish *Clarias gariepinus* exposed to lead. *African J. Biotechnol.* 4(1) 117-122.
25. Olurin, K.B., Olojo, E.A.A. , Mbaka G O. and A.T Akindele, (2006). Histopathological responses of the gill and liver tissues of *Clarias gariepinus* fingerlings to the herbicide, glyphosate. *African Journal of Biotechnology* 5 (24), 2480-2487.
26. Osman,M.M., EL-Fiky S.A., Soheir Y.M.and A.I.Abeer, (2009). Impact of water pollution on histopathological and eletrophoretic characters of *auriochromis niloticus* fish. *Res.J. Environ. Toxicol.*3(1). 9-23.
27. Palaniappan, P.R., M. Vadivelu and V. Vijaysundrum, (2009). Fourier transform raman Spectroscopic analysis of lead exposed muscle tissue of *Catla catla*. *Romanian Journal of Biophysics*.19,117-125.

28. Patil, G.P., (1995). Cited from: Ph. D. thesis Amravati Uni., Amravati, (M S). Studies on some aspects of endocrine regulation due to heavy metal pollution in the fresh water fish, *channa punctatus* (Bloch), 1995.
29. Sastry, K.V. and P.K. Gupta, (1978). The effect of mercuric chloride on the digestive system of *Channa punctatus*: A histopathological study. Environ. Res. 16,270-279.
30. Saxena, M. P. and H. M. Saxena, (2008). Histopathological Changes In Lymphoid Organs Of Fish After Exposure To Water Polluted With Heavy Metals . *The Internet Journal of Veterinary Medicine* 5 (1).
31. Singh, S. and D.P.S. Bhati, (1994). Effect of zinc chloride on certain morphological parameters of the blood in *Channa punctatus* (Bloch), Poll. Res., 13 (4), 381-384.
32. Wang, W.X., (2002). Interaction of trace metals and different marine food chains. Marine Ecology Progress Series. 243, 295-309.
33. Weissman, K., (1972). In: General zoological microtechniques, pub. Blakiston company. Philadelphia.
34. Wilson, B.L., Schwarzer, R.R. and N. Etonyeaku, (1986). The evaluation of heavy metals (Cr, Ni and Co) in the aqueous sediment surrounding a coal burning generating plant. J. Environ. Sci. Health. 21, 791-808.
35. Wong, M.H., K.C. Luk and K.Y. Choi, (1977). The effects of zinc and copper salts on *Cyprinus carpio* and *Ctenopharyngodon idellus*., Acta, Anat. 99, 450.